



**C2R2 MAX**

Version 02 – 2 April 2009

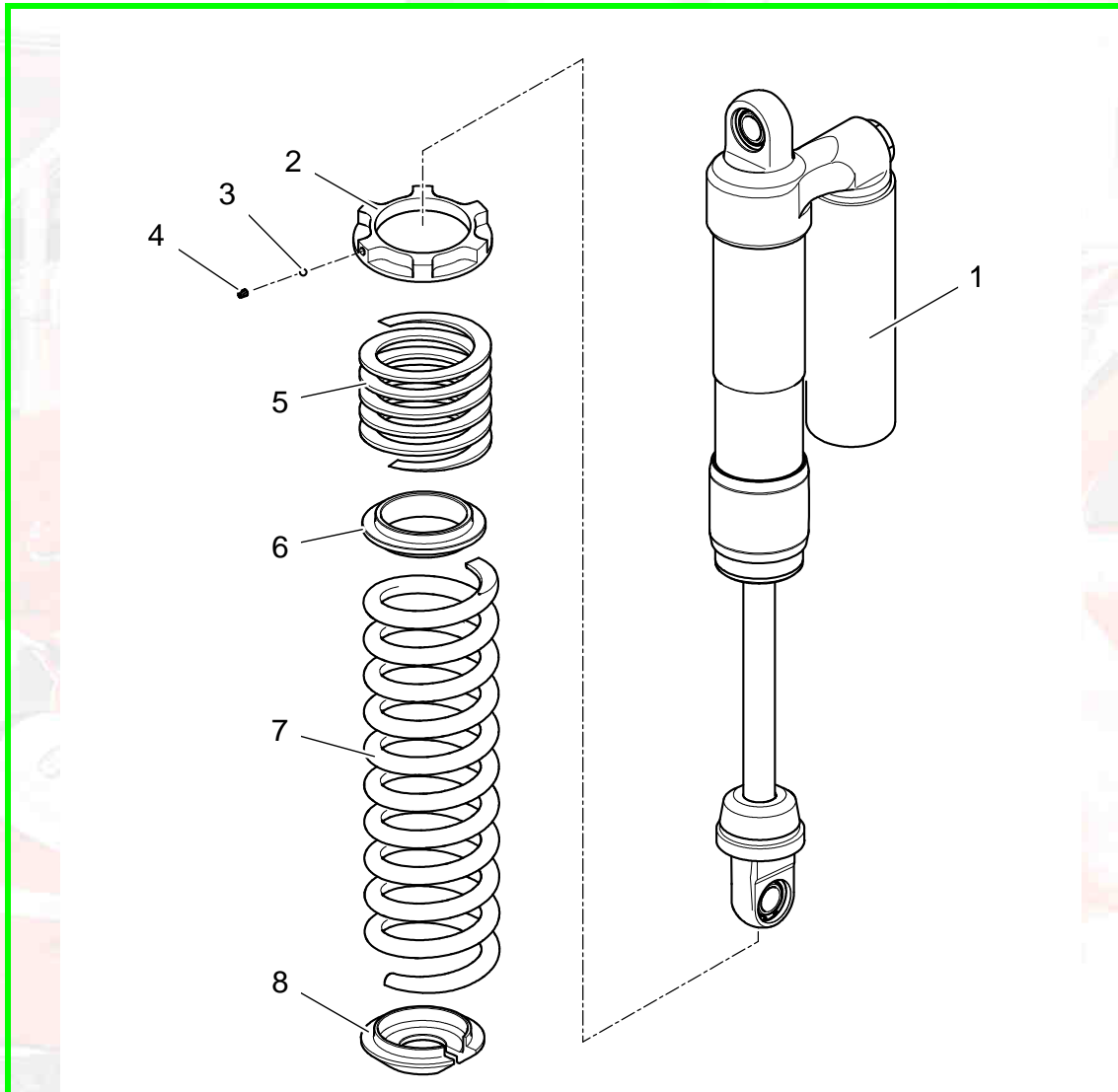
***E25***

# ***REAR SHOCK ABSORBER***



# C2R2MAX

Version 02 – 2 April 2009



Rep	Part number	Qty	Description
1	<b>Console Asphalt</b> 1E2563278A	2	Body: 1E2563209A
			Hydraulic <b>Setting1</b> * 1E2563273A
1	<b>Console Dirt track</b> 1E2563279A	2	Body: 1E2563211A
			Hydraulic <b>Setting1</b> * 1E2563275A
2	1E2563190A	2	Upper housing nut
3	CS740002ST	4	Polyamide ball Ø 5mm
4	PS82505A10	4	Headless screw M5
5	1E2460499A	2	Helper spring
6	1E2462065C	2	Middle housing
7	1E2563171A	2	Main spring, asphalt 37 daN (option)
7	1E2563172A	2	Main spring, asphalt 41 daN
7	1E2563173A	2	Main spring, asphalt 45 daN (option)
7	1E2563168A	2	Main spring, dirt track 31 daN (option)
7	1E2563169A	2	Main spring, dirt track 38 daN
8	1E2563055B	2	Lower housing

\* : reference sold along with a body

## SHOCK SPRING STIFFNESS TIME TABLE :

Part Number	Stiffness	Paint mark	Surface	Remark
1E2563173A	45 N/mm	5 blue	Tarmac	Option
1E2563172A	41 N/mm	4 blue	Tarmac	Kit base
1E2563171A	37 N/mm	3 blue	Tarmac	Option
1E2563169A	38 N/mm	2 yellow	Gravel	Kit base
1E2563168A	31 N/mm	1 yellow	Gravel	Option



Paint mark

**Nota :** We suggest to engrave, on top of each spring, the stiffness and her position (left or right, to respect the balance).



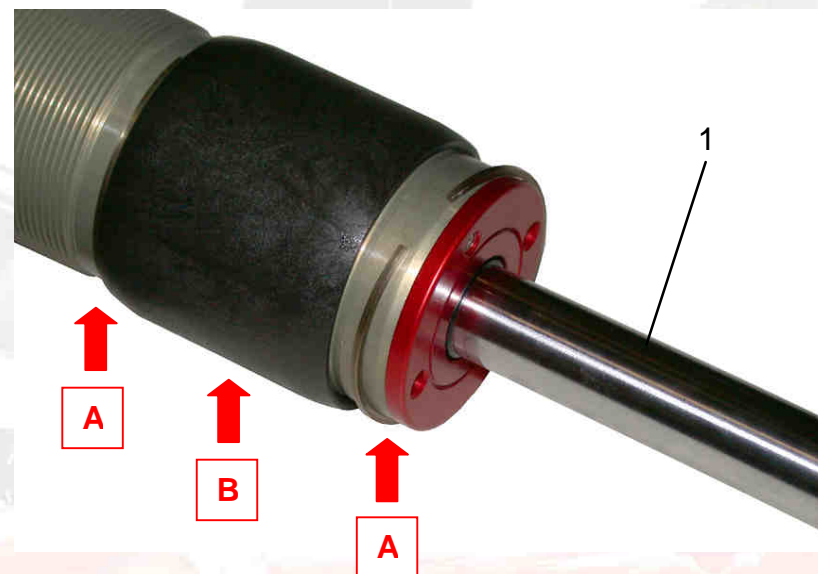
**E25**  
**Rear suspension**



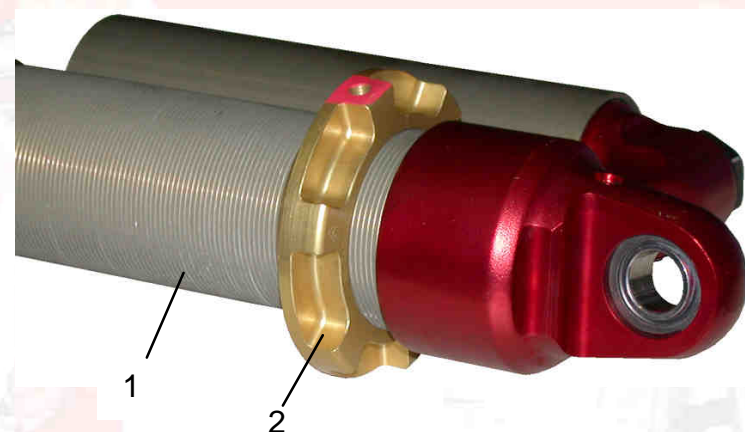
**E**  
**FRONT END  
AND REAR END**

### Assemblage de l'amortisseur arrière.

Démonter les deux joncs d'arrêt (A) et la protection (B) de l'amortisseur arrière (*rep. 1*).

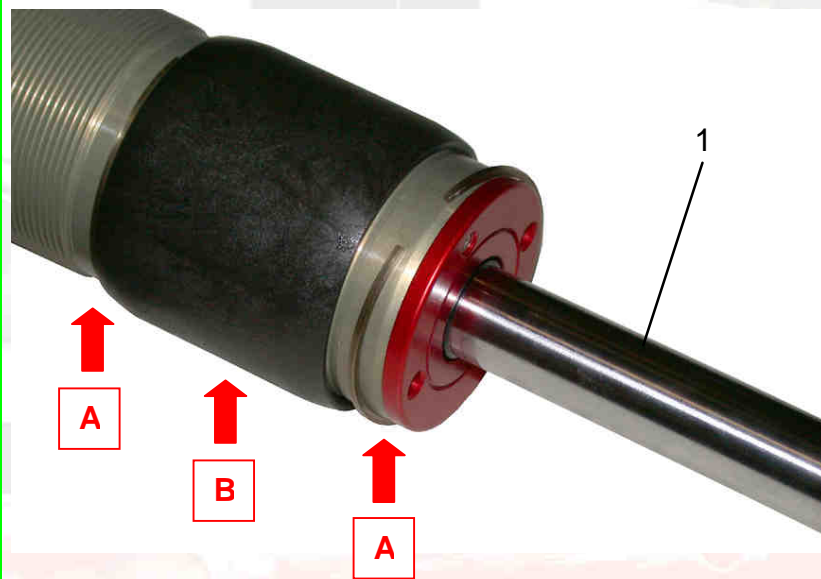


Assembler l'écrou coupelle supérieur (*rep. 2*) sur l'amortisseur AR (*rep. 1*).

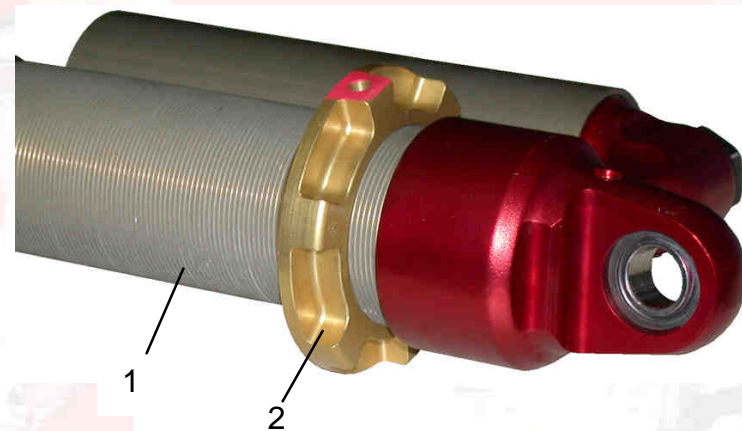


### Fitting the rear shock absorber.

Remove the two retaining rings (**A**) and protection (**B**) from the rear shock absorber ([ref. 1](#)).



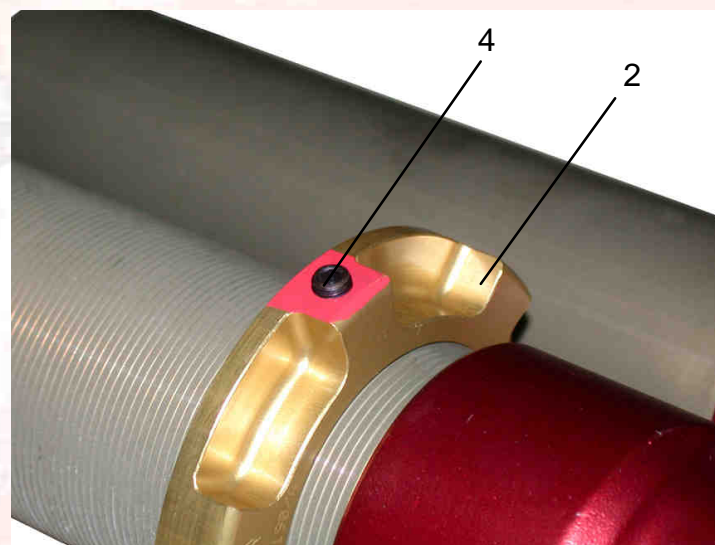
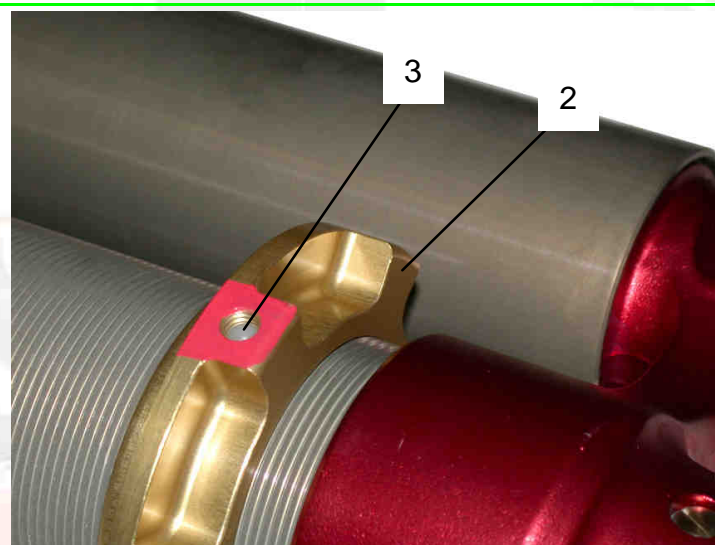
Fit the upper housing nut ([ref. 2](#)) on the rear shock absorber ([ref. 1](#)).





Insert the plastic ball Ø5mm (*ref. 3*) in one of the two holes in the housing (*ref. 2*), and tighten the headless screw (*ref. 4*) as indicated in the two photos opposite.

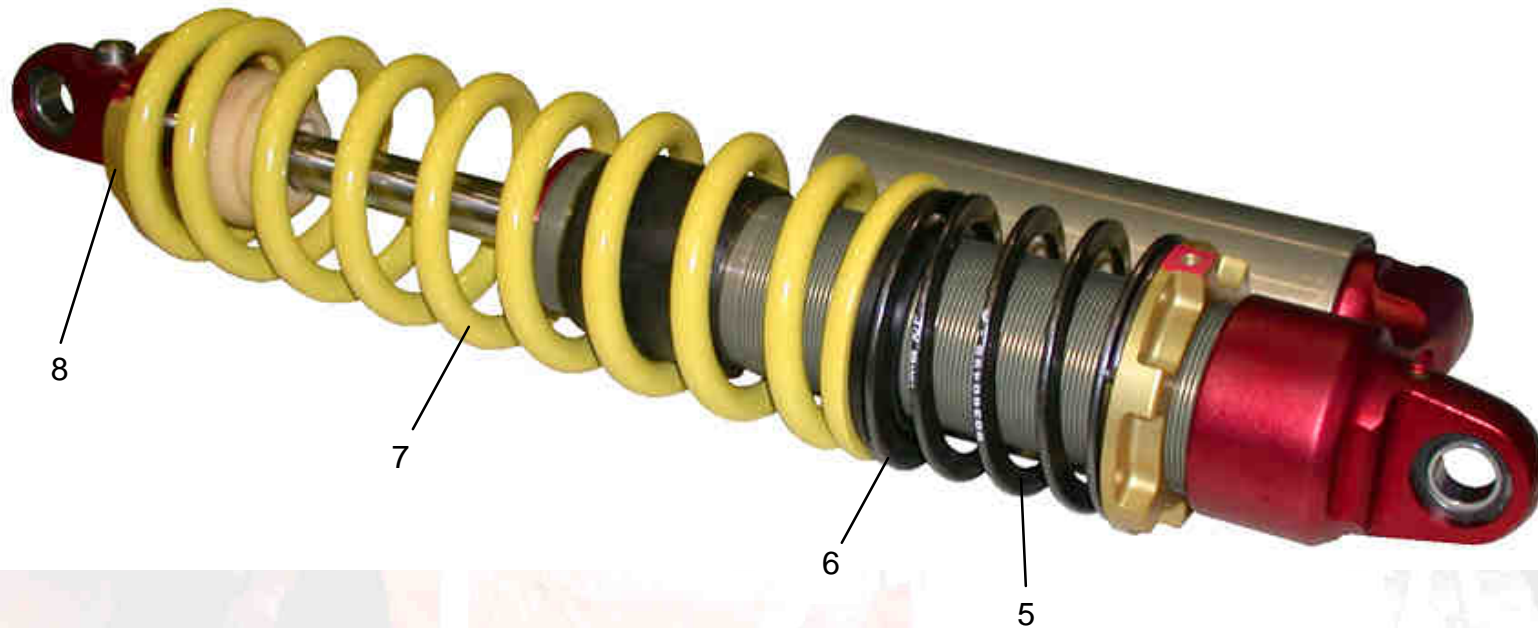
Do not tighten up the headless screw before adjusting the axles and weight per wheel.

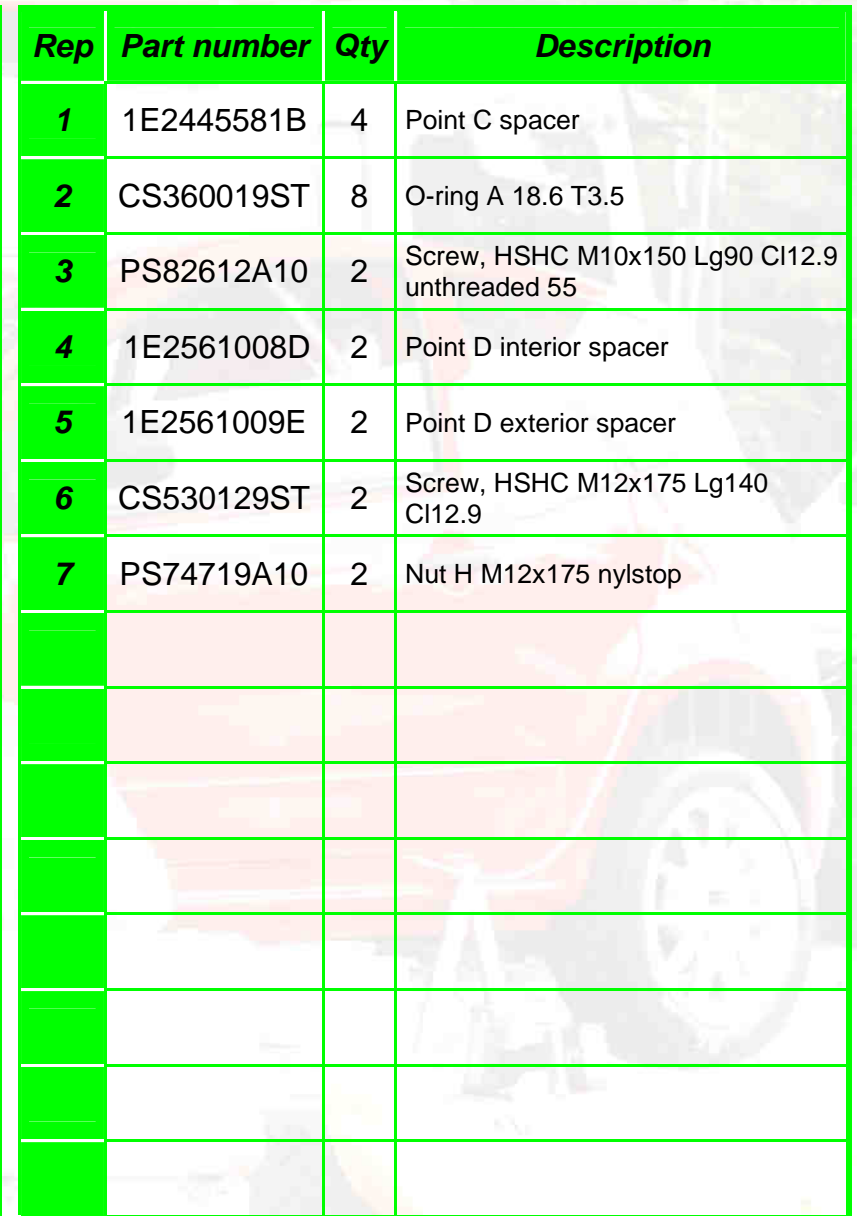


Refit the two retaining rings and protection ring on the rear shock absorber.

Fit the helper spring ([ref. 5](#)), the middle housing ([ref. 6](#)) and the main spring ([ref. 7](#)).

Slightly compress the main spring and fit the lower housing ([ref. 8](#)).







### Fitting spacers on the shock absorber.

Fit the O rings ([ref. 2](#)) on the point C spacers ([ref. 1](#)), the point D interior spacer ([ref. 4](#)), and the point D exterior spacer ([ref. 5](#)).



Fit the point C spacers ([ref. 1](#)) (top attachment) on the head of the shock absorber.



**E25**

**Rear suspension**

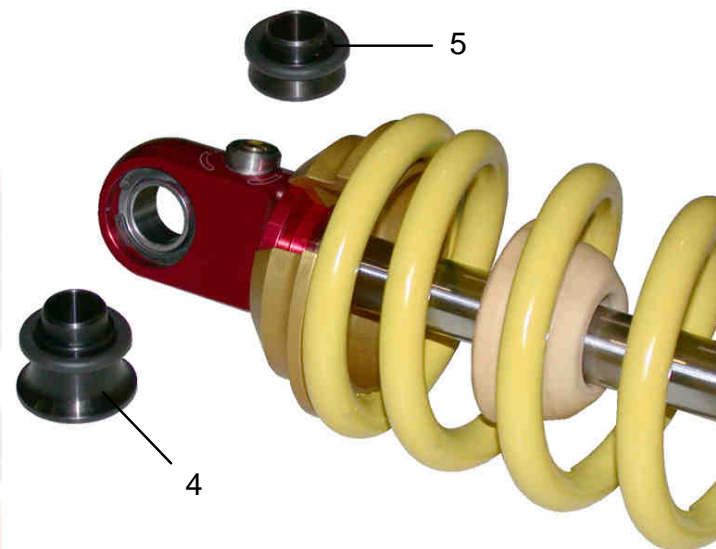


**E**  
**FRONT END**  
**AND REAR END**

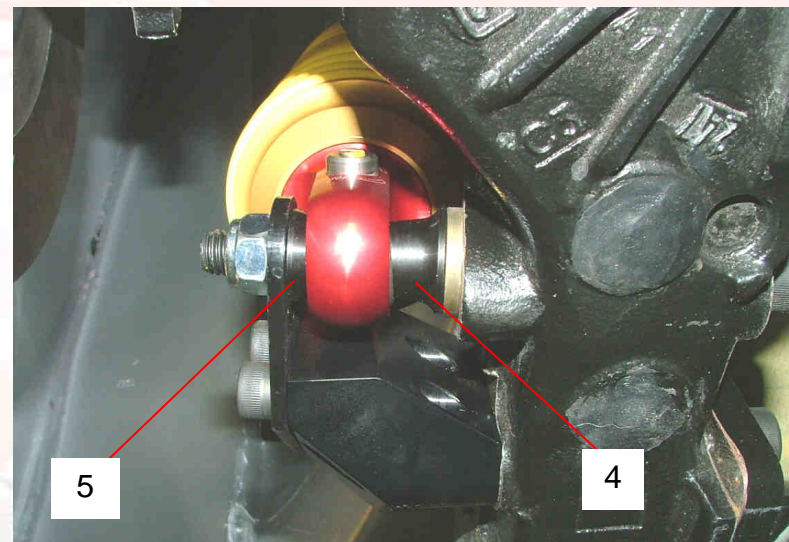
Fit the point D spacers (lower fitting) as indicated below:

The interior spacer ([ref. 4](#)) should be fitted on the body side.

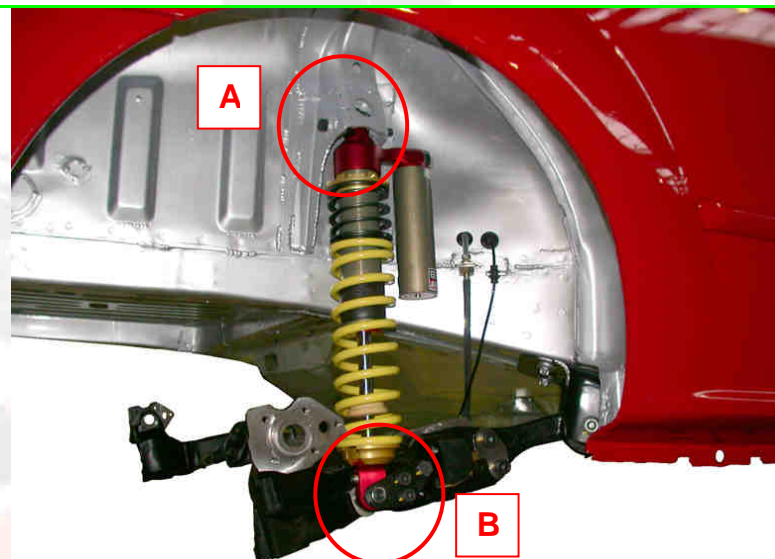
The exterior spacer ([ref. 5](#)) should be fitted on the wheel side.



**Detailed photo:**



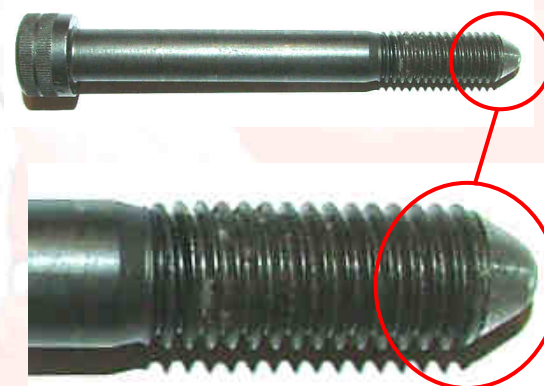
## Fitting the rear shock absorbers on the vehicle.



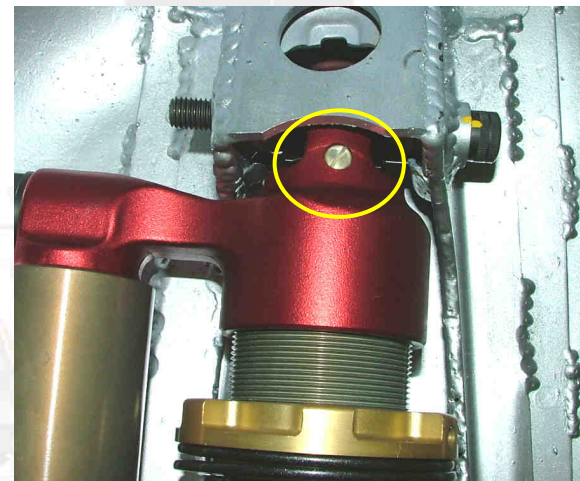
The point C attachment screws (upper and [ref. 3](#)) are too long to begin with. We recommend modifying them, as explained below:

- Cut **5 mm** of the threaded length (i.e. a final length under head of **85mm**).
- Machine a cone or chamfer **7mm** in length.

In this way guiding the screw into the yoke and the shock absorber will be easier.

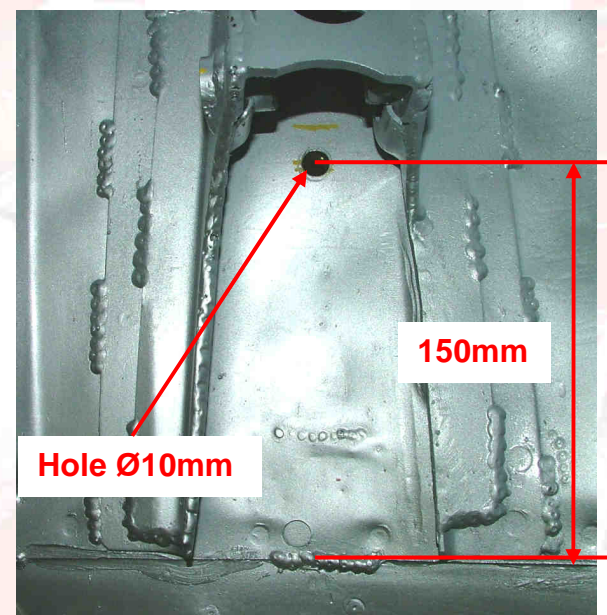


For the left shock absorber, the hydraulic stop adjustment screw can be accessed from outside (see photo opposite).



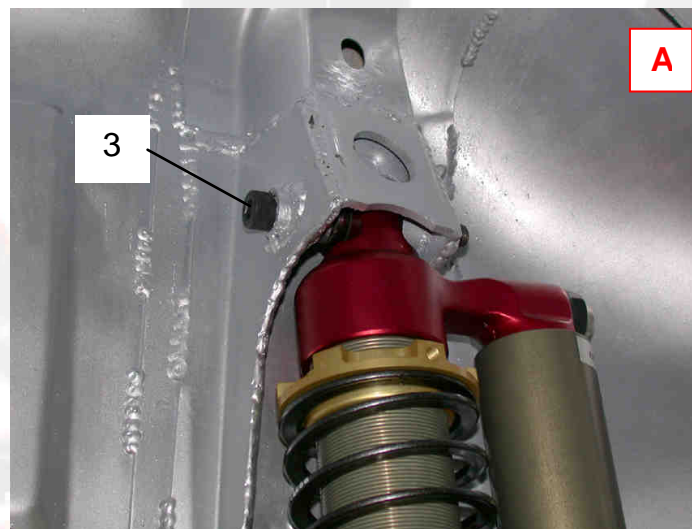
For the right shock absorber, the adjustment screw is turned to the wheelhouse side and is no longer accessible.

Drill a hole in the right wheelhouse, following the indications on the photo opposite.





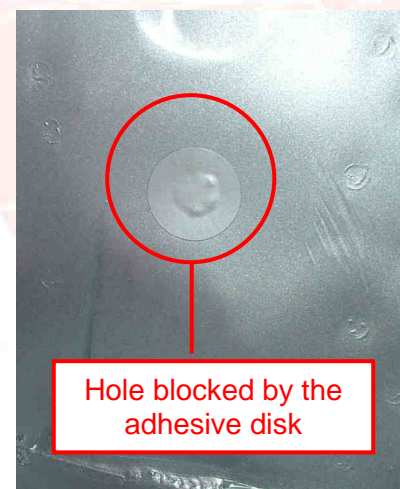
Fit the shock absorbers on the yoke with the screw (*ref. 3*) as modified beforehand.



6.5 m.kg

Once the hydraulic stop has been adjusted for the right shock absorber (refer to the "Settings" chapter), block up the hole with an adhesive disk.

Stop adjustment screw  
seen from the interior



**E25**

**Rear suspension**



**E**  
**FRONT END  
AND REAR END**

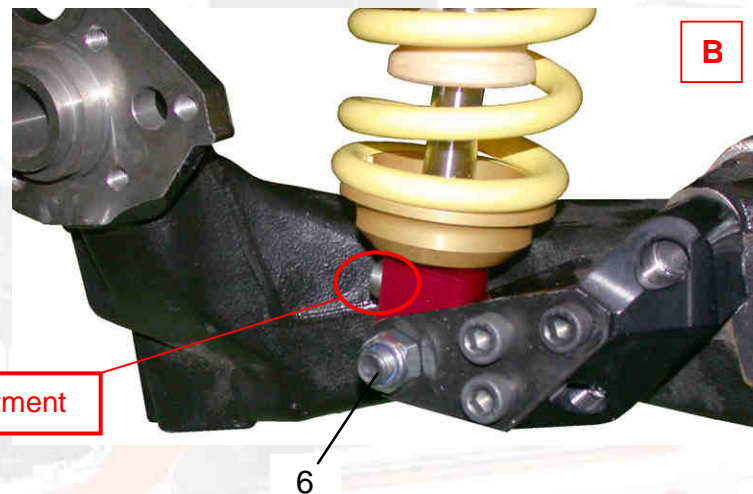




Fit the shock absorber on the rear arm with the screw ([ref. 6](#)) and the nut ([ref. 7](#)).

"added warning" The expansion adjustment screw must always be turned towards the rear (easier to adjust).

Expansion adjustment



10 m.kg